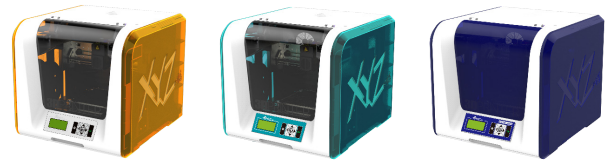




Advanced Tips for da Vinci Jr. 1.0 Series 3D Printer



XYZprinting introduced a new feature "Fast Print" and a useful tool "Jr. Wind Duct" for the compact, flexible da Vinci Jr. Series 3D Printer, which upgrade your 3D printer to a whole new level and enable high-speed printing.

Applicable Models: da Vinci Jr. 1.0 / da Vinci Jr. 1.0w / da Vinci Jr. 1.0 3in1

Wind Duct

The Wind Duct is specifically designed for the da Vinci 1.0 Jr. Series: Enhanced cooling effect reduces the filament dripping and streaking, and provides a smoother printing performance.



Wind Duct

QR Code



File Source:

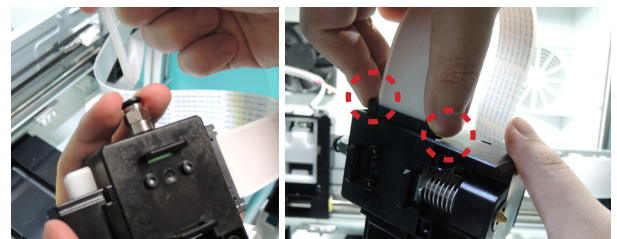
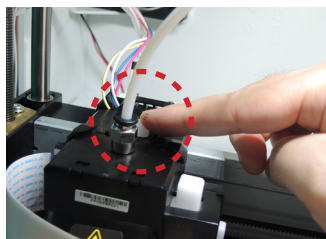
(You can download the 3D file from the website below and use your da Vinci Jr. 1.0 Series 3D Printer for output)

http://us.gallery.xyzprinting.com/us_en/memborgallery/model/201602171056219

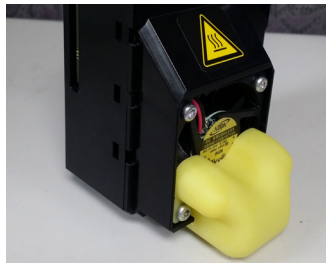
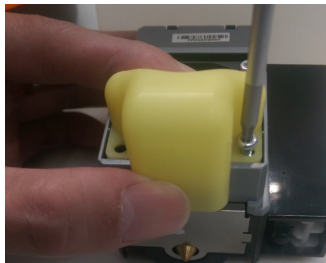
File Name: Wind Duct.3w

Installation Steps

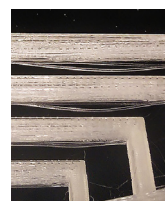
- 1 Unload the filament and then turn off the printer.
- 2 Press the white button at the back of the extruder to release it.
- 3 Lightly press the spring around the feed hole and remove the filament guide tube. Press on the harness chips and disconnect the cable.



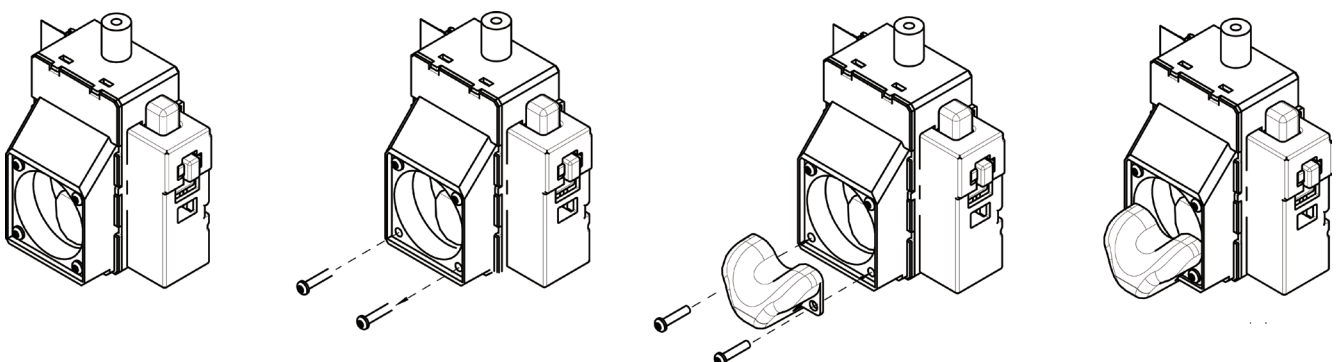
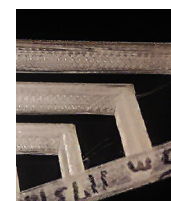
- 4 Use a screwdriver to mount the wind duct upon the printer module.
- 5 Once mounted, the extruder can be installed on the printer.



Printing result
before installation



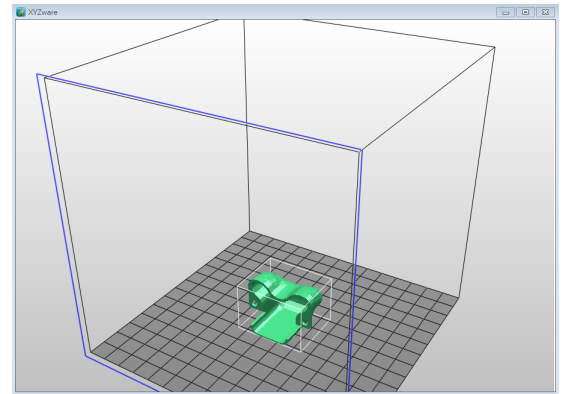
After



Optimal Printing Parameters

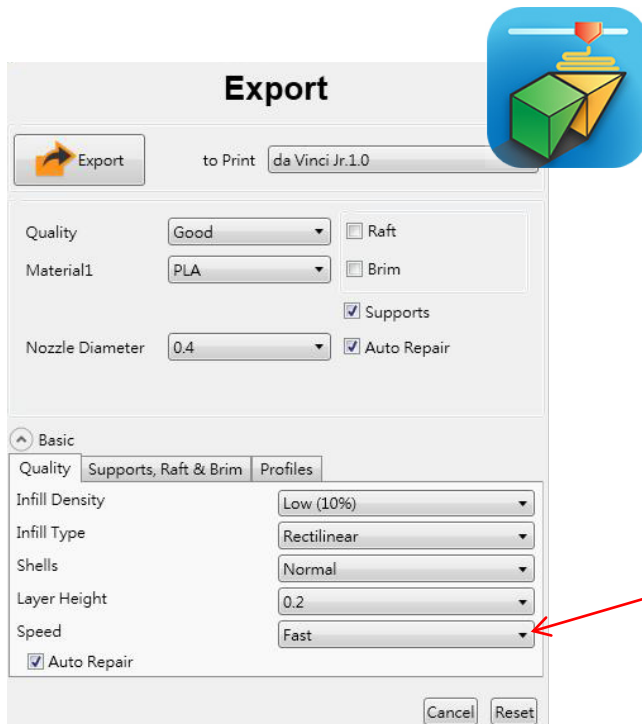
Recommended Software Version(s): XYZware 2.1.12.1 or later

Printer Setting	Recommended Option
Infill Density	Low(10%)
Shells	Normal
Supports	No
Raft	No
Brim	No
Resolution	0.2(mm)
Speed	Standard



Fast Print

XYZprinting introduced a new version of the XYZware and added the "Fast Print"* feature for a significantly increased maximum printing speed of 100mm/s*, saving up to 50% of waiting times and speeding up object formation.



Parameter Information

You can select the "Fast" option only when the Layer Height in the software settings is set to 0.1mm or 0.2mm.

Printer Setting	Layer Height
Low	0.1-0.4
Medium	0.1-0.4
High	0.1-0.4
Fast	0.1-0.2

(Unit: mm)

* "Fast Print" will be a built-in feature of XYZware V.2.1.12.1 or later versions. You can get the latest updates via the Internet or by visiting our official website: www.xyzprinting.com

*The printing speed is the filament extrusion speed measured in the laboratory in accordance with specific test items; print results may vary depending on the operating conditions.