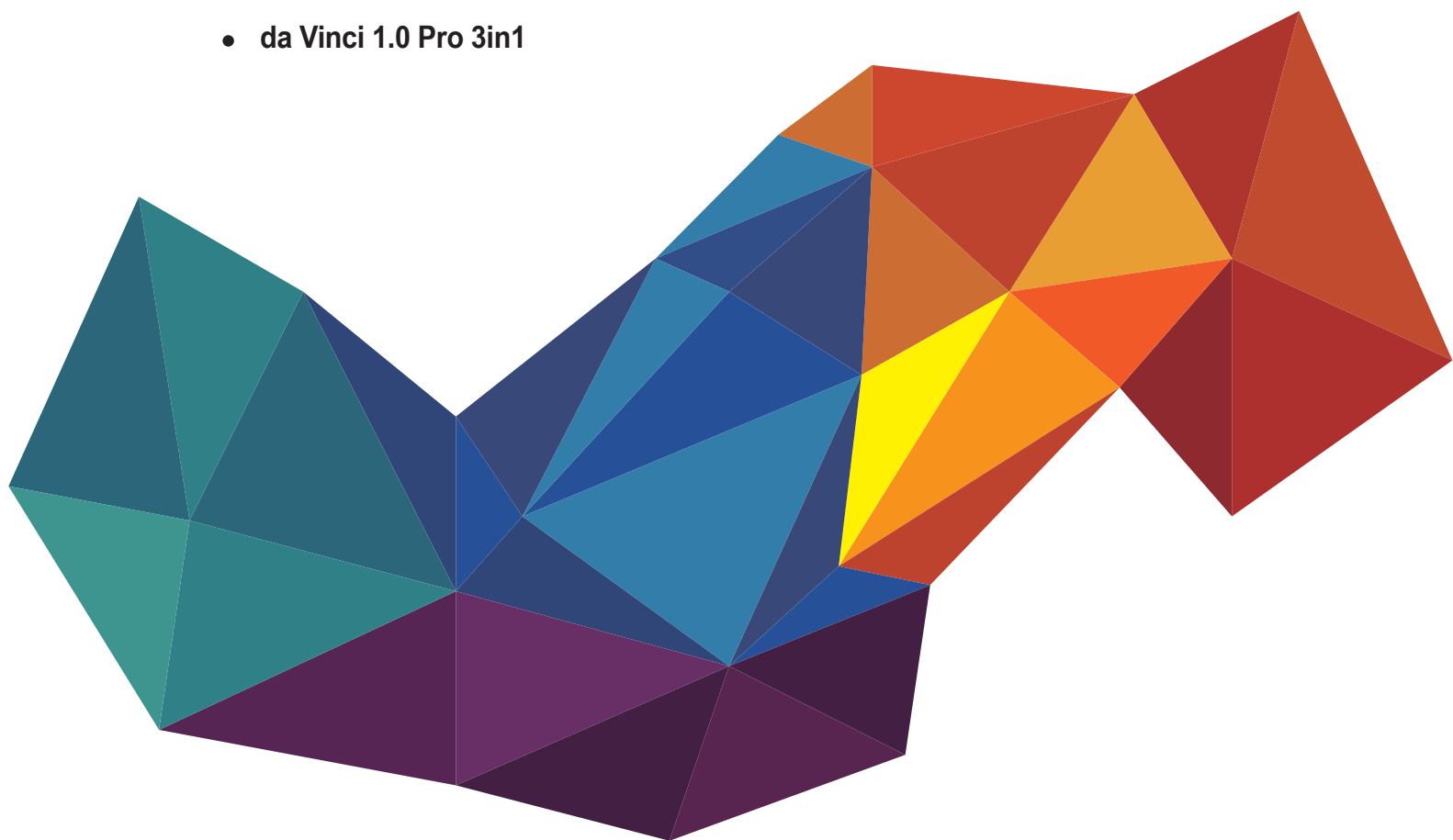




XYZprinting Add-in Program User Manual

Compatible XYZprinting 3D Printer model:

- da Vinci 1.0A/1.0 AiO
- da Vinci Jr. 1.0
- da Vinci Jr. 1.0 w
- da Vinci Jr. 3in1
- da Vinci 1.0Pro
- da Vinci 1.0 Pro 3in1



Announcement

Limitation of Liability Clause

Although it is our intention to produce a manual and product functions that are correct and stable, in no event shall XYZprinting be liable for any direct, special, indirect, incidental, consequential damages (including data loss of your computer). It is strongly recommended to backup or move your important data before using this software to prevent data loss and corruption.

Trademarks

SOLIDWORKS® is registered trademarks in the United States and/or other countries

Printing History

Reprints of this manual's edition number may incorporate changed material since last release. Minor corrections and updates may be incorporated without changing the publication date or edition number.

Doc Edition	Month	Year
1.0	10	2016

XYZprinting Add-in Program User Manual

"XYZprinting add-in" is a product plug-in to SOLIDWORKS® software. This plug-in software offer more convenient to make print model with 3D printer when you design via SOLIDWORKS® software.

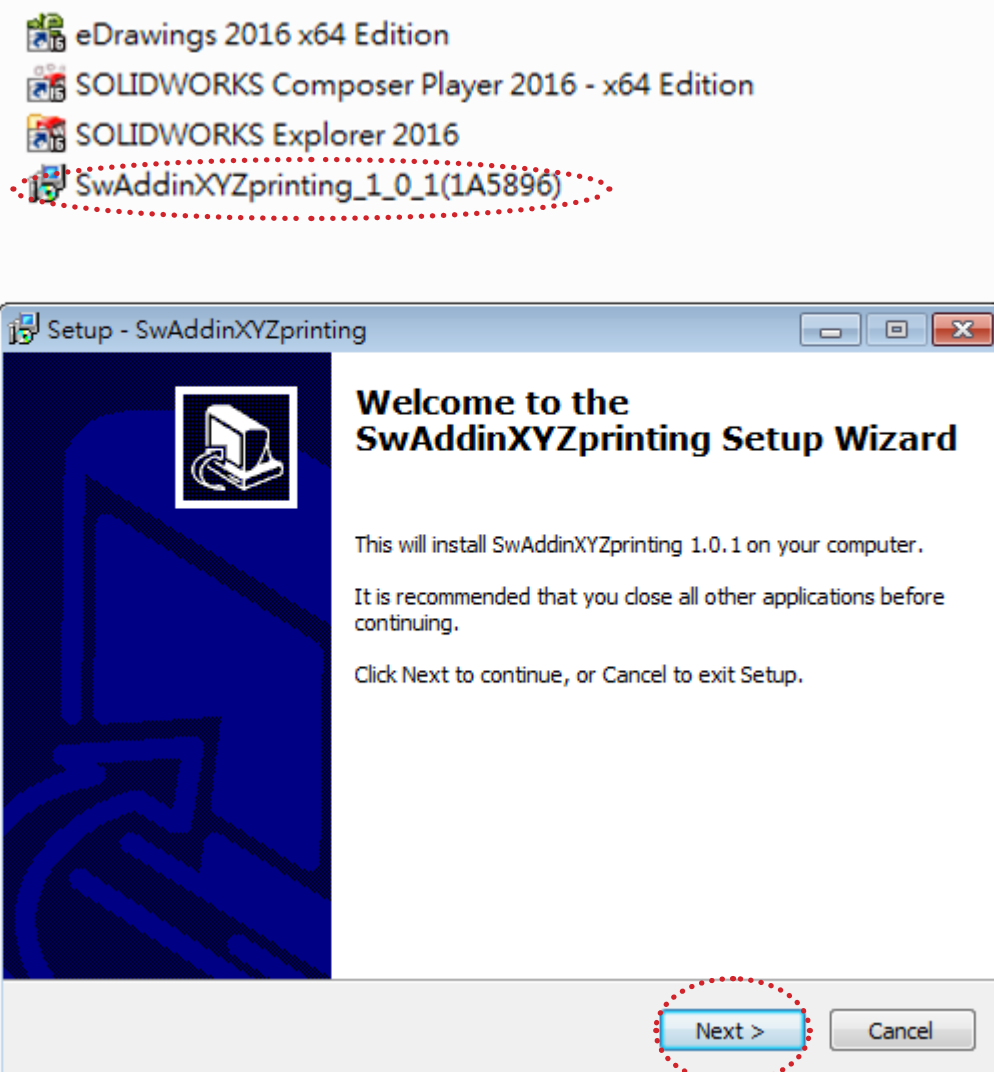
Compatible XYZprinting 3D Printer model: da Vinci 1.0A/1.0 AiO, da Vinci Jr. 1.0, da Vinci Jr. 1.0 w, da Vinci Jr. 3in1, da Vinci 1.0Pro and da Vinci 1.0 Pro 3in1

Note: XYZprinting add-in software **ONLY** available in version of SOLIDWORKS 2016

Overview

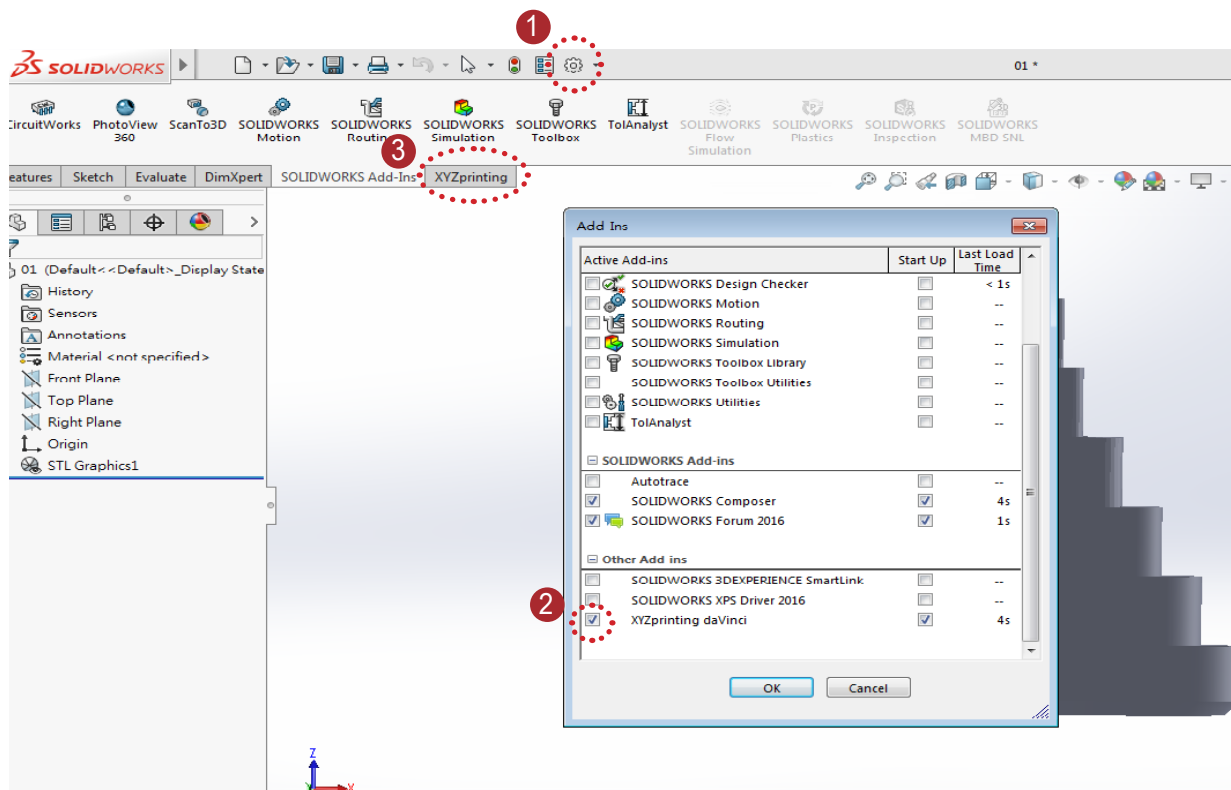
1.Install Software

Download "SwAddinXYZprinting" and install to your computer.



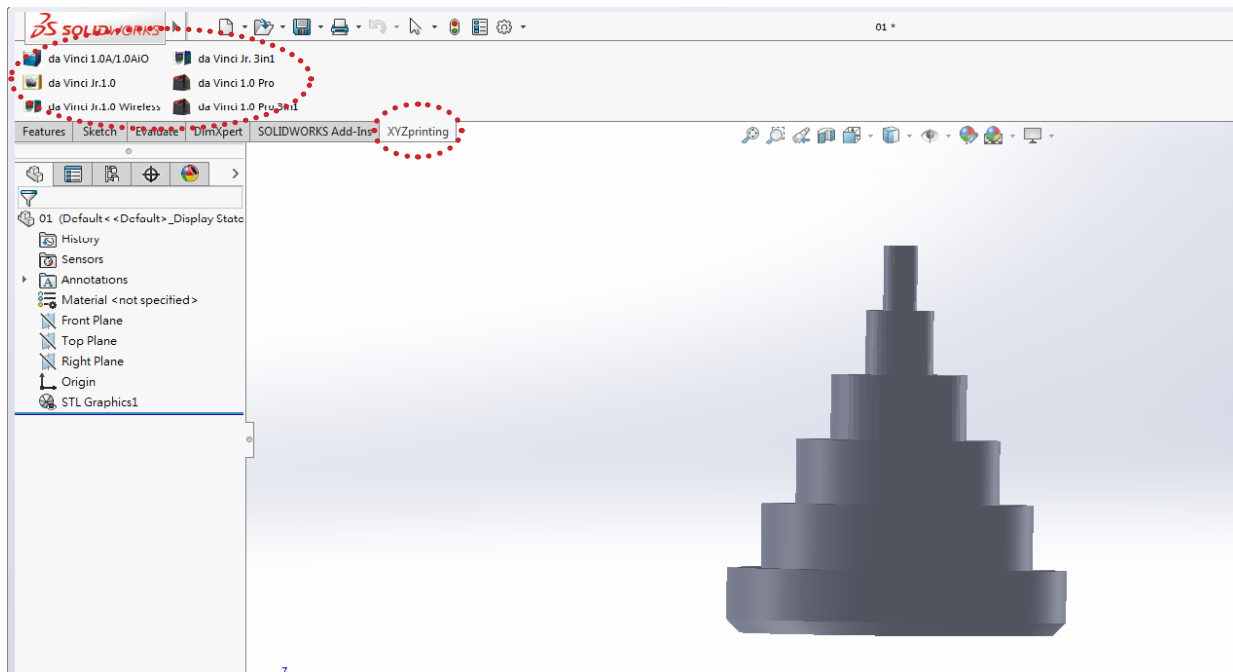
Click "SOLIDWORKS 2016" to start. Click "Option", which is on toolbar, and select "Add-Ins" to choose "XYZprinting daVinci" and "XYZ printing" will show on the list. With the add-in software installed, CAD file can be send to XYZprinting 3D printers directly.

- 1 Click "Option"
- 2 Click "XYZprinting da Vinci"
- 3 Check "XYZprinting" on list



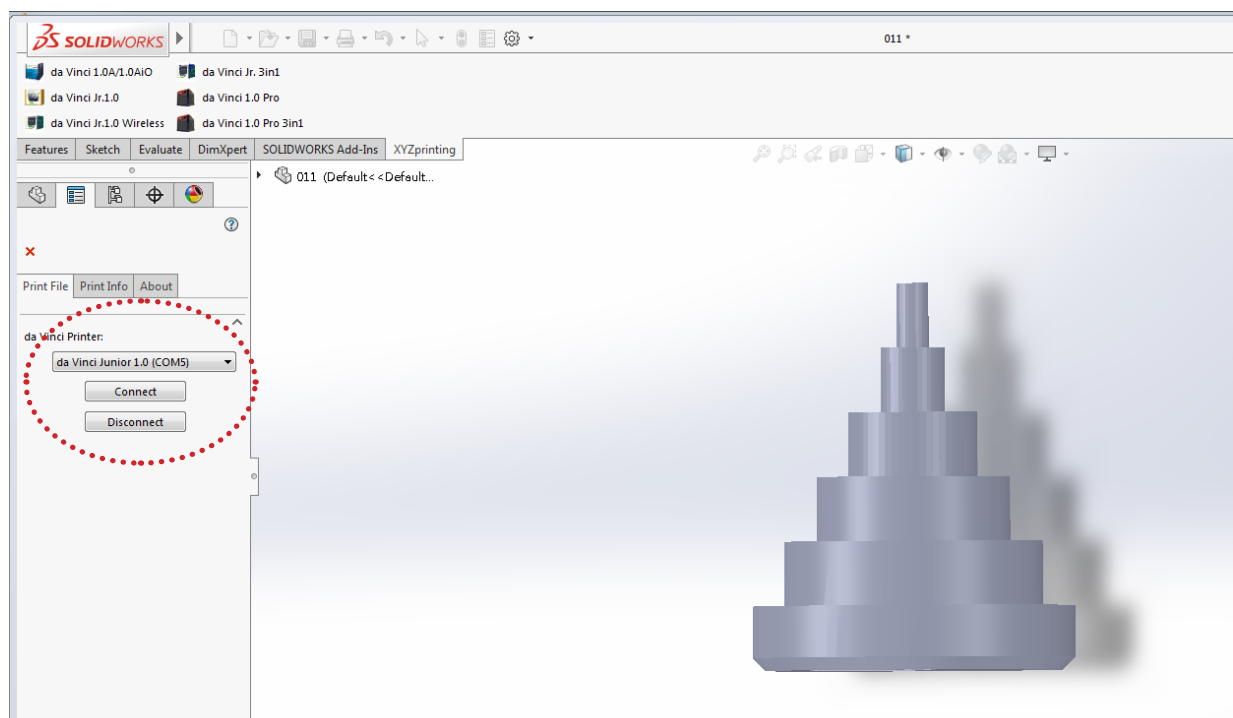
2. Choose Printer Model

When XYZprinting add-in is installed, XYZprinting tab will be displayed in the toolbar. Open "SOLIDWORKS 2016" and choose a printer model on the "XYZprinting" tab.



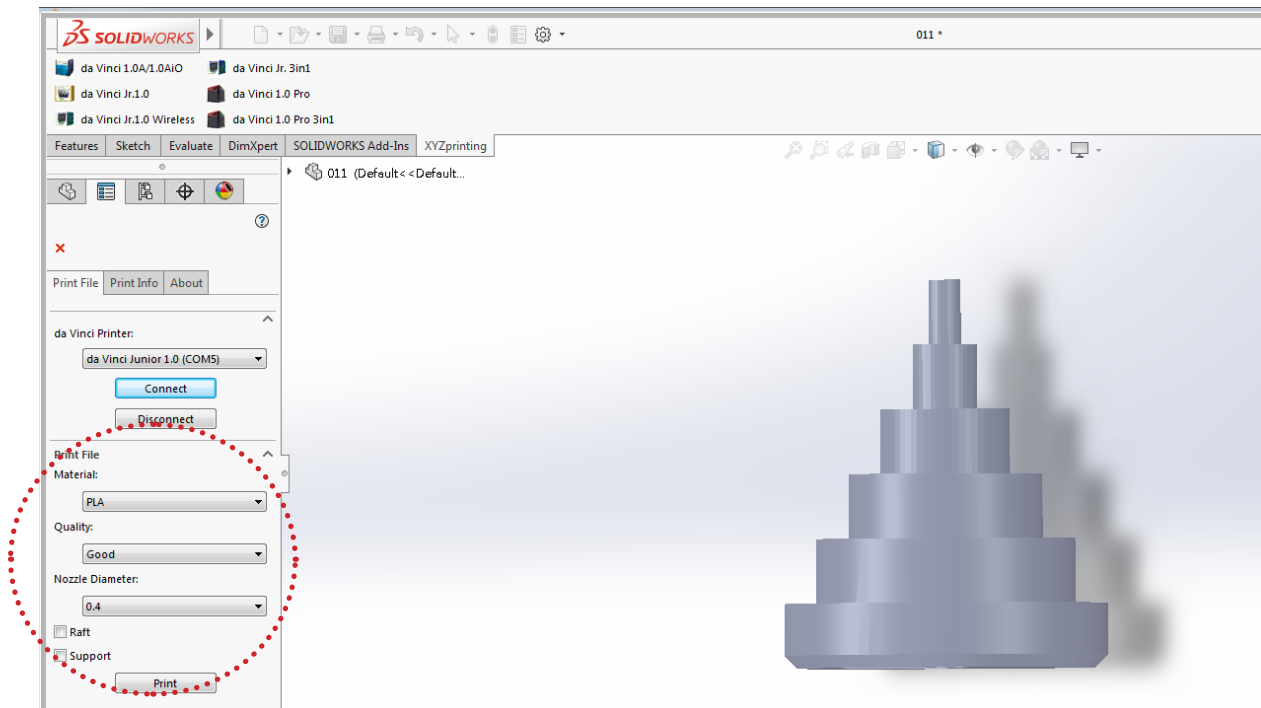
3. Connect to the Printer

XYZprinting printer(s) connected to the computer will be listed in the "Print File" tab. Select the targeted printer and click on "Connect"

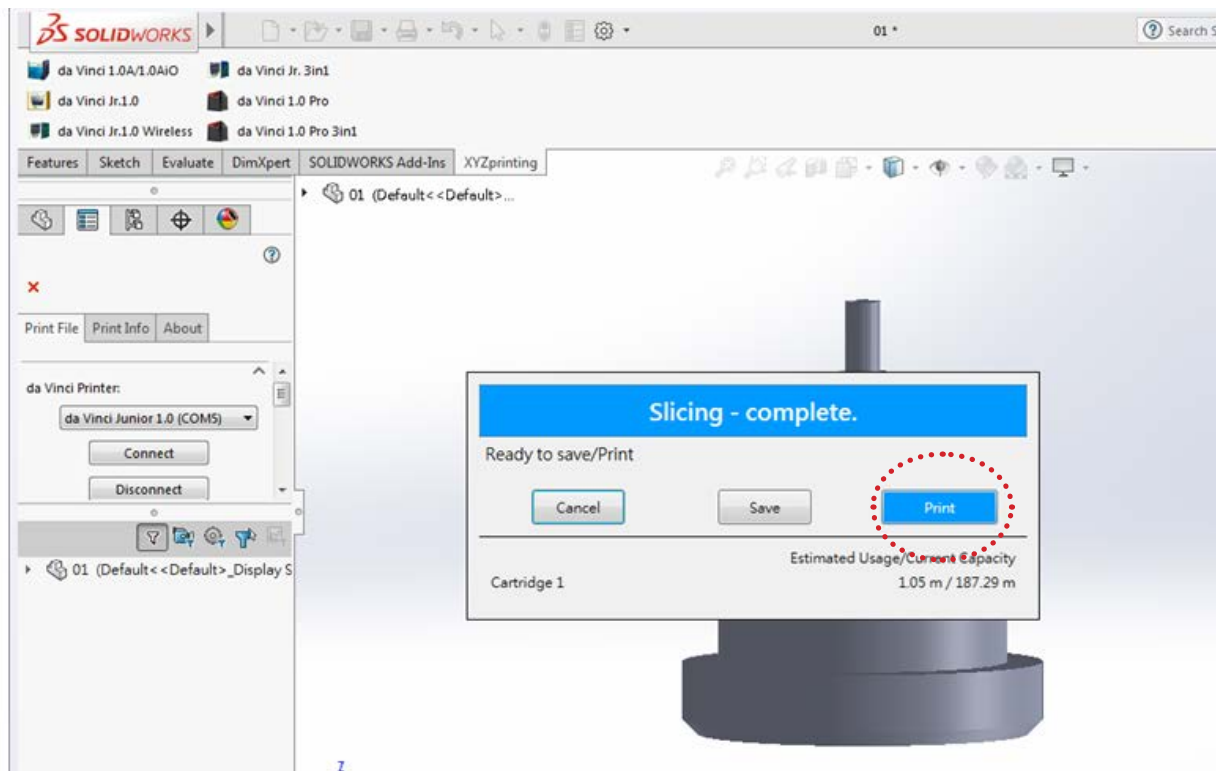


4. Setup Your Printing and Print

After the connection is setup, the windows of slicing profile will be shown at the bottom of the selected printer.



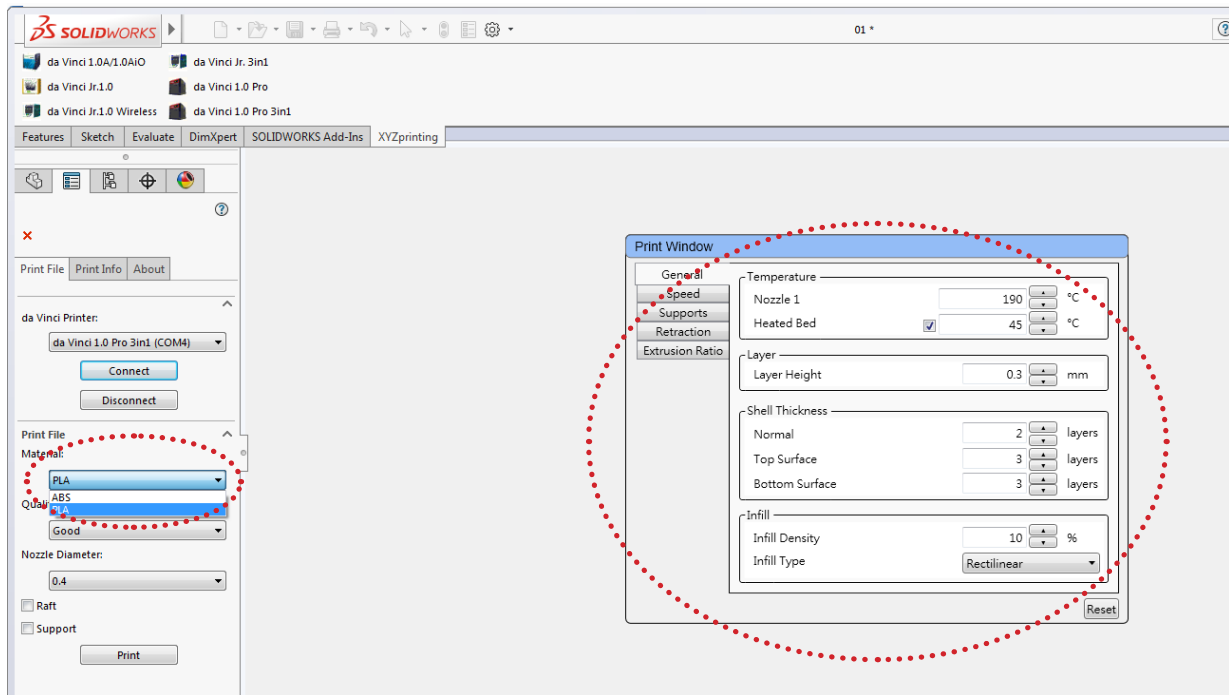
Print parameters are setup in the windows of slicing profile. Please select optimized print parameter based on the object to be printed and press "Print" button to slice.



After the object is sliced, press "Print" to start printing. You may also click "Save" to save the file in "3w" format.

Notice

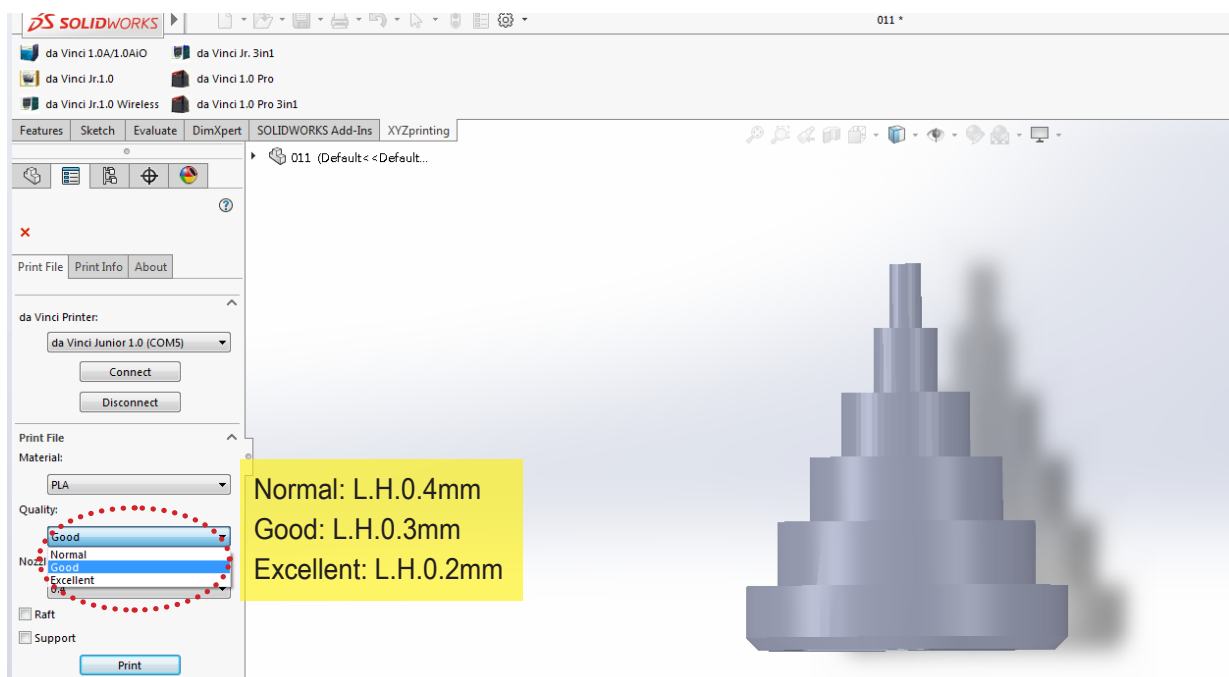
da Vinci series can be select material. Moreover, da Vinci 1.0 Pro and da Vinci 1.0 Pro 3 in 1 are advance model. These two model can selected more detail printing parameter.



4.1 Quality

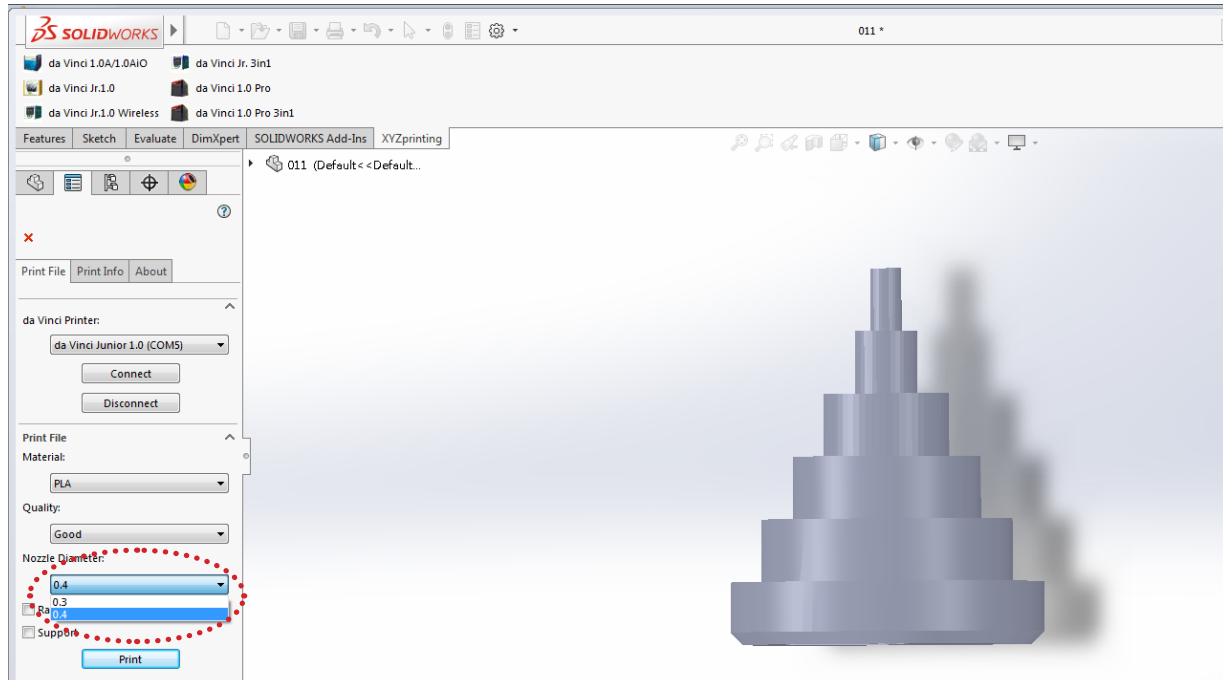
The quality of print object will respect to layer height (L.H.). There are three quality options: Normal (L.H.:0.4mm), Good (L.H.:0.3mm), and Excellent (L.H.:0.2mm).

Printed product quality will affect printing time. For example, high quality prints takes more time than low quality prints since smaller layer height creates more precise print objects.



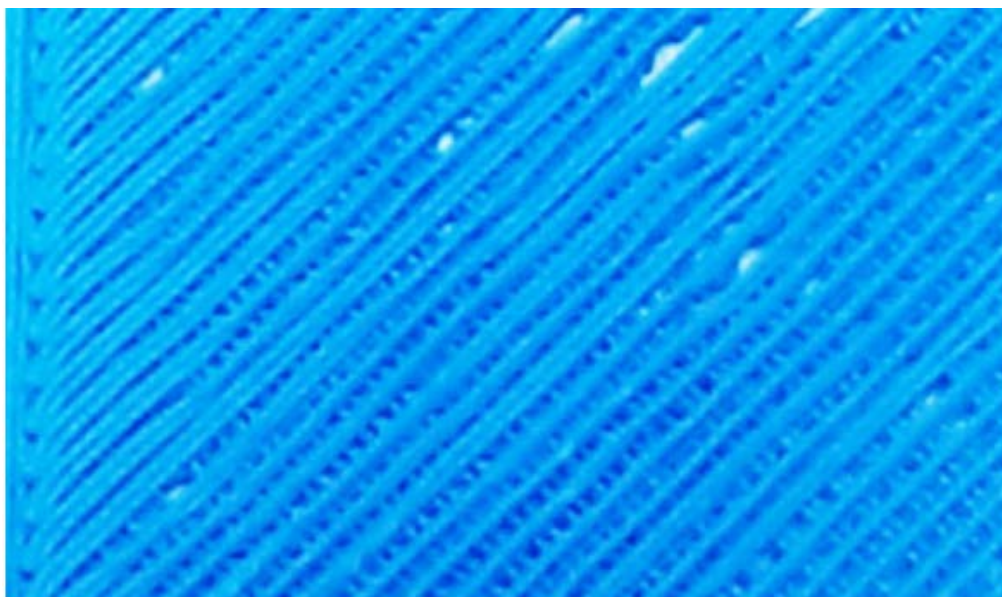
4.2 Nozzle Diameter

Nozzle diameter can be selected (0.3/0.4mm) and only for da Vinci Jr. series.



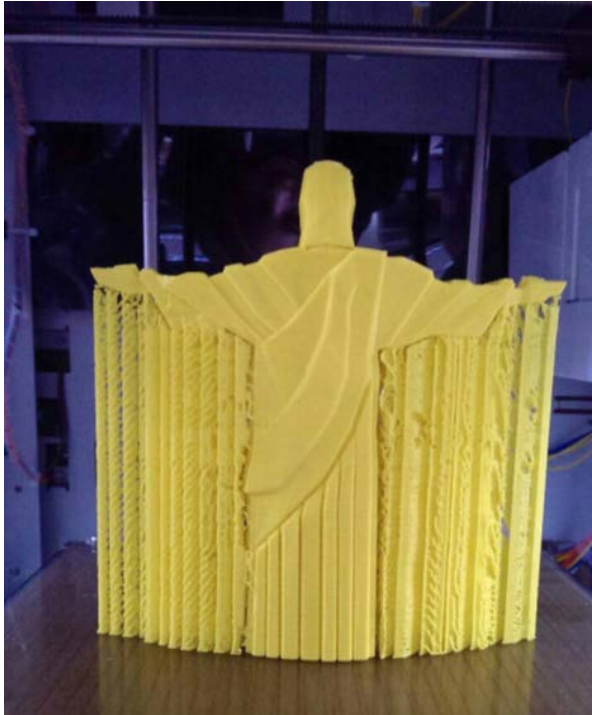
4.3 Raft

You need to put more attention when you print slender objects. Since its physical unstable, print objects may buckle or twist. You may add "raft" when you printing slender objects, increasing contact area between print objects and print bed. Rafts offer stable structure during process. Moreover, Printouts with raft on the bottom is easier to be removed from the print bed.



4.4 Support

Support is only required for objects with overhangs. Adding Support helps improve structural strength of print object and prevent the object from deforming during printing.



Model with support (rear view)

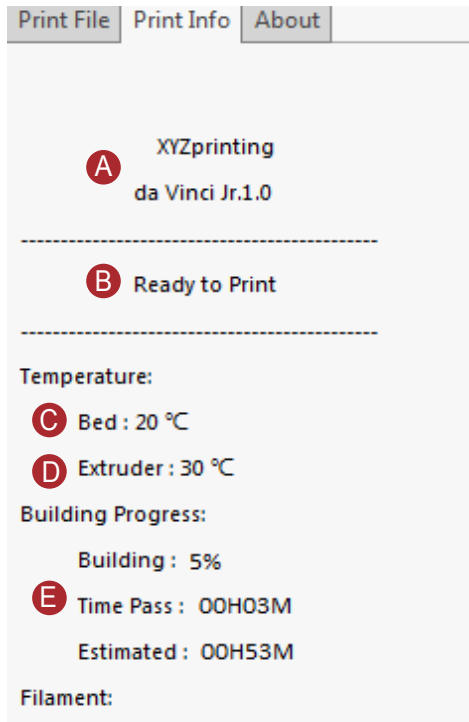


Model with support removed

5. Others

5.1 Print Info

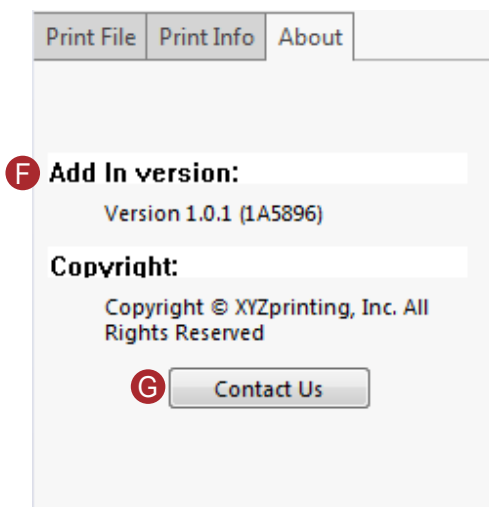
Printer status is shown in the tab "Print Info". You can check the status of current connected printer.



- A** Current connected printer
- B** Printer status:
 - Printer Busy: The printer is now occupied
 - Ready to print: The printer is available to print now
- C** Current print bed temperature
- D** Current extruder temperature
- E** Current printing progress

5.2 About

The tab "Help" shows XYZprinting add-in version. Moreover, you can access XYZprinting website by clicking the "Contact Us" button.



- F** Current "XYZprinting add-in" software version
- G** Link to XYZprinting website

